

**PIRANHA P4 HI-POWER | SURFACE MOUNT**

**PIRANHA**  
 — S E R I E S —



Introducing the all-new Piranha P4, an exciting addition to the proven Piranha range.

Patented X-Beam technology and a class leading 2750 Lumens in single colour or Dual colour and 4000 Lumens in RGBW colour change.

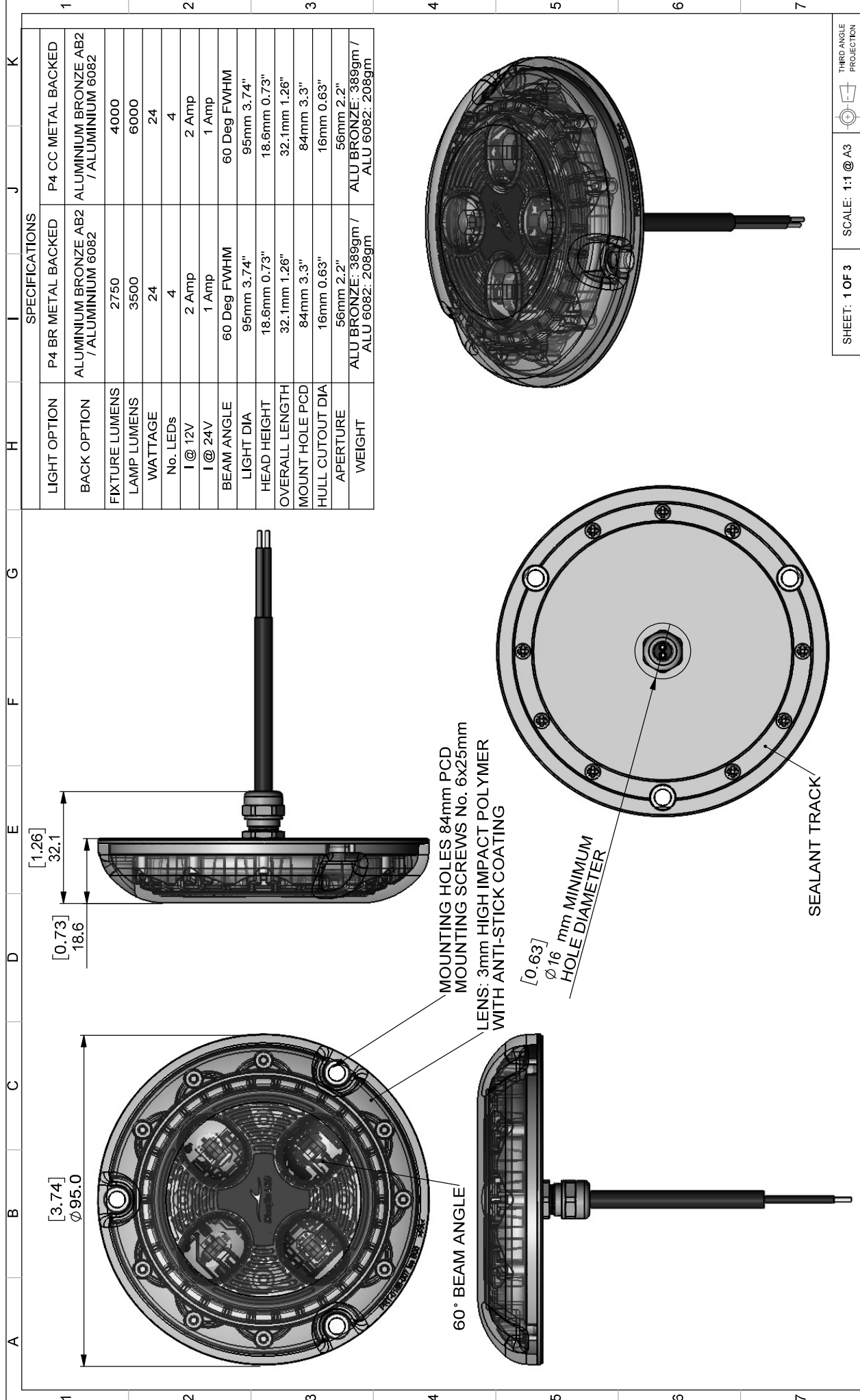
Compact & low-profile design makes the Piranha P4 the perfect choice for all types of boats and hull materials.

Incredibly simple to install just one small cable entry hole and 3 mounting screws.

- RINA Type Approved
- 2-Year Warranty

SPECIFICATION	PIRANHA P4 HI-POWER
Mounting Type	Surface
Hole cut out size	16 mm
Maximum Lamp Lumens	3500 / CC 6000
Fixture Lumens	2750 / CC 4000
Max Wattage	24 watts
Typical Life Expectancy	50,000 hours
Voltage	12v/24v
Power Draw	12v 2 amps/24v 1 amp
Protection	Over / Under Voltage, Over Current, Reverse Polarity protection, Active thermal protection. Hydro block technology
Fixture Profile	18.6mm
Fixture Diameter	95mm
Lens Type	Optical grade high impact polymer, Guard X Coating
Fixture Material	AB2 Marine grade Bronze or Aluminium Hard Anodised
Beam Angle	60 Degree
Warranty	2 Year
Type Approval	RINA IEC 60529
Available Colours	Diamond White 6500k Cobalt Blue Colour Change
Suitable Use	Suitable for in or out of water use
Spacing	1.2 - 2mtr
Driver Type	Integral
Total weight	Alu Bronze 389 gm, Aluminium 6082 is 208 gm
Attached cable length	2 mtr
Included in box	In-line fuse holder & rated fuse, Gel connector, Inline Crimps, Heat shrink, Fixing Screws, Template and installation instructions
ACCESSORIES	(OPTIONAL)
Junction Box	4 Way IP68 Wiring Junction Box
BL-Switch	Panel mount illuminated switch & wiring loom
I.Y.S Lighting Control	IYS Mini Lighting Control Module





SPECIFICATIONS		THIRD ANGLE PROJECTION	
LIGHT OPTION	P4 BR METAL BACKED	P4 CC METAL BACKED	
BACK OPTION	ALUMINIUM BRONZE AB2 / ALUMINIUM 6082	ALUMINIUM BRONZE AB2 / ALUMINIUM 6082	
FIXTURE LUMENS	2750	4000	
LAMP LUMENS	3500	6000	
WATTAGE	24	24	
No. LEDs	4	4	
I @ 12V	2 Amp	2 Amp	
I @ 24V	1 Amp	1 Amp	
BEAM ANGLE	60 Deg FWHM	60 Deg FWHM	
LIGHT DIA	95mm 3.74"	95mm 3.74"	
HEAD HEIGHT	18.6mm 0.73"	18.6mm 0.73"	
OVERALL LENGTH	32.1mm 1.26"	32.1mm 1.26"	
MOUNT HOLE PCD	84mm 3.3"	84mm 3.3"	
HULL CUTOUT DIA	16mm 0.63"	16mm 0.63"	
APERTURE	56mm 2.2"	56mm 2.2"	
WEIGHT	ALU BRONZE: 389gm / ALU 6082: 208gm	ALU BRONZE: 389gm / ALU 6082: 208gm	

SHEET: 1 OF 3	SCALE: 1:1 @ A3	THIRD ANGLE PROJECTION
DESCRIPTION: PIRANHA P4 - METAL BACKED		
MATERIAL: SEE PART DRAWINGS		
FINISH: SEE PART DRAWINGS		
DRAWING NO: GAA-0166 Iss D00A	ISSUE/REV: D00 A	STATUS: RELEASED

ISS	REV	STATUS	DATE	CHANGE	DWN	CHKD	APPD
D00	A	RELEASED	2007/2/24		DWL	APH	APH

NOTES:

ALL DIMENSIONS ARE IN MILLIMETERS

TOLERANCES ON ALL DIMENSIONS UNLESS OTHERWISE STATED

VEHICLE UNITS: ±0.25

ONE DECIMAL PLACE: ±0.1

TWO DECIMAL PLACES: ±0.05

ANGLES: ±0.5°

ALL UNSPECIFIED CHAMFERS: 1 X 45°

BREAK ALL SHARP EDGES: 0.1 TO 0.5

**Bluefin LED**  
Underwater Lighting

WE HAVE CONSTANTLY EXPANDED OUR PRODUCT RANGE TO MEET THE NEEDS OF THE MARINE INDUSTRY. ALL PARTS AND MATERIALS ARE OF THE HIGHEST QUALITY. ALL PARTS AND MATERIALS ARE AUTHORIZED BY THE MANUFACTURER. ALL PARTS AND MATERIALS ARE AUTHORIZED BY THE MANUFACTURER. ALL PARTS AND MATERIALS ARE AUTHORIZED BY THE MANUFACTURER.