

TRIM TABS 22

HOW TRIM TABS WORK.....22.02

TRIM TAB KITS

- Self-Leveling Trim Tabs.....22.02
- BOLT Electric Trim Tab Kits.....22.03
- Lenco-to-BOLT Conversion Kit.....22.04
- Hydraulic-to-BOLT Conversion Kit22.04
- Hydraulic Trim Tab Kits.....22.05

CONTROLS

- Rocker Switches22.06
- Integrated Helm Controls22.06
- AutoTrim Pro Automatic Controls22.06

SPARE PARTS

- Actuators22.07
- Trim Plane Assemblies.....22.07
- Hydraulic System Spart Parts22.08
- Common Replacement Parts22.09

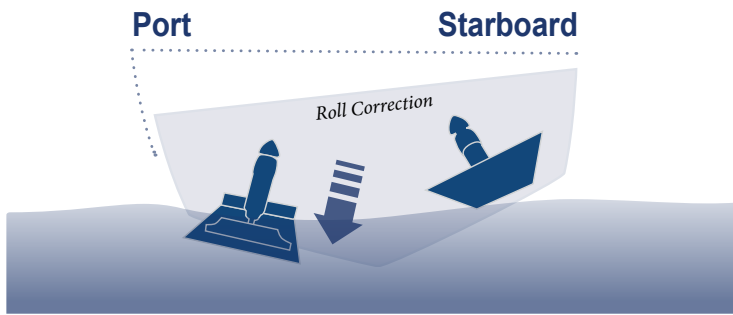
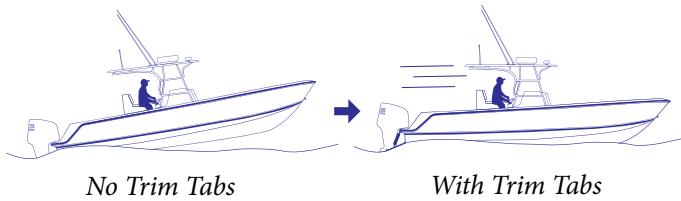


HOW TRIM TABS WORK

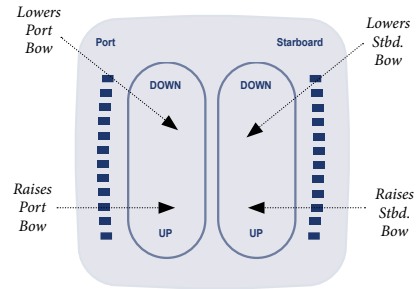
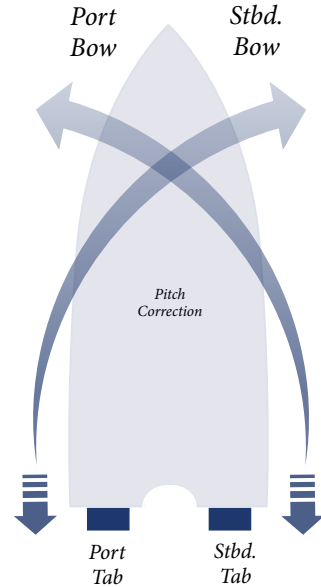
When the tabs are deployed downward, the water force on the trim tab surface creates upward pressure, raising the stern and lowering the bow. The port trim tab lowers the starboard bow, and the starboard trim tab lowers the port bow. The control is intuitively wired so that all you have to do is press the button in the direction you want the bow to move.

Properly sized trim tabs improve the performance of your boat by adjusting the running angle of your vessel. Bennett Marine trim tabs help you get on plane faster, correct listing to one side, improve visibility and increase your fuel efficiency.

- Get you up on plane quickly.
- Increase performance and fuel efficiency.
- Increase visibility.
- Adjust the boat's attitude for changes in speed, sea conditions and shifting weight.
- Correct listing on either side of the boat.



When the port tab is lowered independently, an upward force at the port stern of the boat is created. The inverse applies when lowering the starboard tab independently.



Self-Leveling Trim Tabs (SLT)

A simple, durable and affordable trimming solution for smaller boats. Quick and easy installation with nothing to do inside the boat – just mount the actuators and trim tabs on the transom and enjoy the benefits.

- Actuator length: 290mm
- Tabs with Bennett's exclusive interlocking hinge.
- Three mounting options to easily change lift.
- Plane at lower speeds & improve fuel efficiency.
- Eliminate porpoising and chine walking.
- Reduce engine laboring and improve fuel efficiency.

KIT CONTAINS:

- 2 x 14 gauge stainless steel tabs.
- 2 x Strong, durable spring loaded actuators.
- All stainless steel hardware.



Part No.	Bennett Code	Span/Chord mm (inch)	Boat Size* (m)
JPW16055	SLT6	152 x 203 (6 x 8)	3 - 5
JPW16056	SLT10	254 x 254 (10 x 10)	5 - 6

*Boat size is recommended only



▶ Watch the video
BennettTrimTabs.com/SLT

BOLT ELECTRIC TRIM TABS



BOLT Electric Trim Tab Kits (12V)

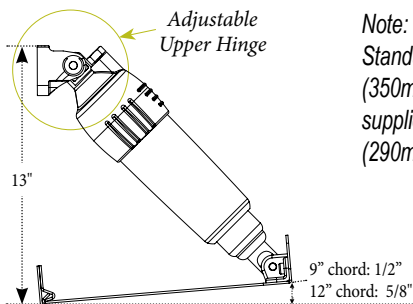
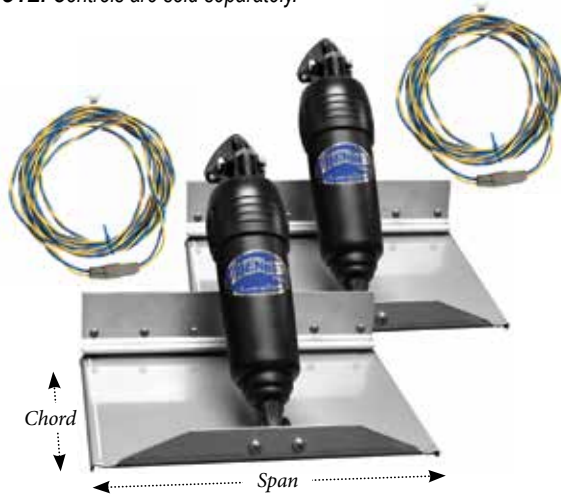
Balance loads, plane faster, increase efficiency and performance with Bennett BOLT Electric Trim Tab Systems, built to outlast any electric trim tab system on the market.

- Completely sealed upper hinge with no exposed wires.

KIT CONTAINS:

- 2 x 12-volt adjustable upper hinge actuators with 6ft. wire harnesses and waterproof connectors.
- 2 x 304-grade stainless steel trim planes (tabs) and mounting plates.
- 2 x 20ft. wire harnesses with waterproof connectors.

NOTE: Controls are sold separately.



Note: Kits comes with Standard actuators (350mm) but can be supplied with Short (290mm) upon request.

*Boat size is recommended only

Part No.	Bennett Code	Span/Chord mm (inch)	Tab	Boat Size* (m)
JPW16300	BOLT124	305 x 101 (12 x 4)	Piano	4-6
JPW16301	BOLT129	305 x 228 (12 x 9)	Trailing	4-6
JPW16302	BOLT189	457 x 228 (18 x 9)	Trailing	6-7
JPW16303	BOLT249	610 x 228 (24 x 9)	Trailing	6-8
JPW16304	BOLT1212	305 x 305 (12 x 12)	Riveted	5-7
JPW16305	BOLT1812	457 x 305 (18 x 12)	Riveted	6-8
JPW16306	BOLT2412	610 x 305 (24 x 12)	Riveted	7-9

BOLT Electric – Edge Mount Limited Space Trim Tab Kits (12V)

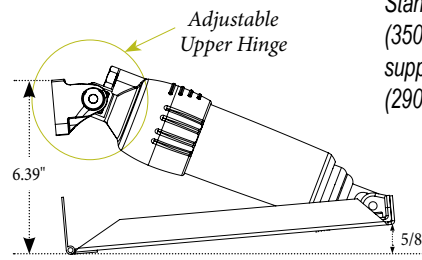
Designed with an adjustable upper hinge for transoms with limited vertical space. Tabs turn up for added strength and feature piano-hinged backing plates.

- Requires less than 6.5" (165mm) of vertical transom space to install.

KIT CONTAINS:

- 2 x 12-volt adjustable upper hinge actuators with 6ft. wire harnesses and waterproof connectors.
- 2 x Stainless steel trim planes (tabs) and mounting plates.
- 2 x 20ft. wire harnesses with waterproof connectors.

NOTE: Controls are sold separately.

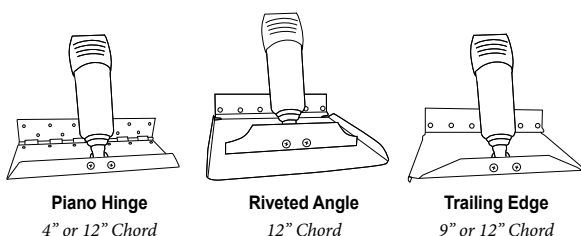


Note: Kits comes with Standard actuators (350mm) but can be supplied with Short (290mm) upon request.

*Boat size is recommended only

Part No.	Bennett Code	Span/Chord mm (inch)	Tab	Boat Size* (m)
JPW16310	BOLT612ED	152 x 305 (6 x 12)	Piano	4-6
JPW16311	BOLT912ED	228 x 305 (9 x 12)	Piano	4-6
JPW16312	BOLT1212ED	305 x 305 (12 x 12)	Piano	5-7

Trim Tab Styles



Helm Control Options (sold separately)



BOLT ELECTRIC TRIM TABS



Lenco-to-BOLT Upgrade Conversion Kit (12V)

This kit includes everything necessary for a cost-effective, quick and easy upgrade from Lenco actuators to Bennett's exceptionally durable and dependable actuators. Bennett electric actuators are built to last, backed by a lifetime limited warranty.

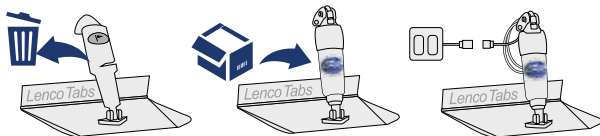
- Works with Lenco "Standard Mount", "Standard Performance", and "Edge Mount" systems.
- Plug-and-play connection to your existing standard Lenco controls.
- Simply replace the Lenco actuators with Bennett BOLT actuators using the existing drill holes.
- Easy installation with no new holes to drill.
- Keep your existing trim tabs.

NOTE: Controls and tabs are sold separately.



Installation Guide

- 1 Remove existing Lenco actuators, retaining your Lenco tabs
- 2 Swap your Bennett BOLT actuators onto the Lenco tabs
- 3 Connect "Plug n Play" connectors to your Lenco Controls



Part No.	Bennett Code	Description
JPW16330	BOLTLKCON	Lenco-to-Bolt Upgrade Kit

Bennett Hydraulic-to-BOLT Electric Conversion Kit (12V)

All you need for a quick and easy conversion from Bennett hydraulic actuators to Bennett BOLT electric actuators. BOLT actuators are exceptionally durable and dependable, backed by a lifetime limited warranty on the actuator.

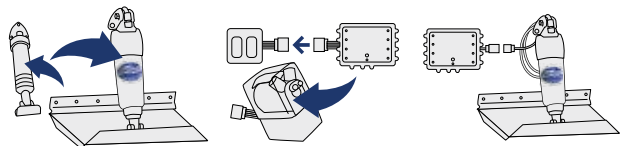
- Quick and easy conversion from standard Bennett hydraulic single actuator systems (A1101A and A1101ARC) using your existing wiring, rocker switch and trim tabs.
- Plug-and-play connection to existing standard Bennett Rocker Switch.
- No rewiring or drilling of new holes required.
- Equipped with auto tab retraction and diagnostics relay module.

NOTE: Controls and tabs are sold separately.



Installation Guide

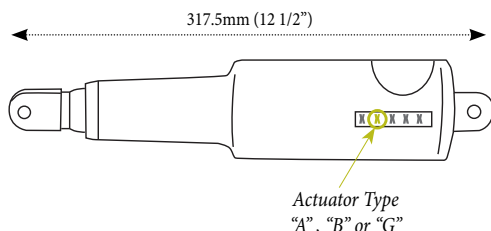
- 1 Remove the existing Bennett actuator and swap in BOLT on existing tabs
- 2 Remove the hydraulic pump and connect the "Plug n play" relay module
- 3 Connect "Plug n play" BOLT electric actuators to the relay module



Part No.	Bennett Code	Description
JPW16328	HYDBOLTCON	Hydraulic-to-Bolt Conversion Kit
JPW16331	BOLTBLT	BOLT Kit Without Plane Assembly

Determining compatibility with your existing Lenco actuators

- Bennett Lenco-to-BOLT Upgrade Conversion Kit is compatible with Lenco "Standard Mount", "Standard Performance", and "Edge Mount" systems.



To determine whether your Lenco actuators meet the compatibility requirements, locate the identification stamp (available since approximately May 2008).

The actuator type is indicated by the second number in the 5-digit code. Lenco actuators with either "A", "B" or "G" indicated as the second digit in the 5-digit code sequence are compatible with the Bennett Lenco-to-BOLT Upgrade Kit.

Short stroke Lenco actuators (11-3/8" and 10-7/8" actuator length), or long stroke Lenco actuators (14" and 13" actuator length) are NOT compatible.

HYDRAULIC TRIM TABS



Standard (Classic) and Sport Hydraulic Trim Tab Kits

Hydraulic trim tabs are known for power, precision and durability. Get the most from your boat, no matter what the load, speed or sea conditions. Using the helm control, you can adjust the tabs individually or in unison to create the perfect cruising attitude. Increase speed and fuel economy, smooth a rough ride and get on plane faster.

KIT CONTAINS:

- 2 x Trim plane assemblies
- 2 or 4 x Hydraulic actuators (A1200S)
- 1 x Hydraulic Power Unit (V351HPU1)
- 1 x Helm Control (see below options)
- Hydraulic tubing and hardware



Features:

- Get on plane fast, and stay on plane at intermediate speeds.
- Correct listing and uneven loads.
- Improve visibility and safety.
- Reduce pounding and eliminate porpoising.
- Increase speed and fuel efficiency.
- Low maintenance, long-term value, and easy to service.
- Exclusive transom mount inter-locking tab design.

Note: Kits comes with Standard actuators (340mm) but can be supplied with Short (290mm) or Extra Short (270mm) upon request.

Complete System with Rocker Control



*Boat size is recommended only

Part No.	Bennett Code	Span/Chord		Tab	No. of Act.	Boat Size* (m)
		mm (inch)				
JPW16213	M80	203 x 254 (8 x 10)	Sport	2	5-6	
JPW16212	M120	254 x 305 (10 x 12)	Sport	2	6-7	
JPW16001	129E	305 x 228 (12 x 9)	Trailing	2	4-6	
JPW16009	189E	457 x 228 (18 x 9)	Trailing	2	6-7	
JPW16011	249E	610 x 228 (24 x 9)	Trailing	2	6-8	
JPW16012	309E	762 x 228 (30 x 9)	Trailing	4	7-9	
JPW16014	369E	914 x 228 (36 x 9)	Trailing	4	8-10	
JPW16018	429E	1067 x 228 (42 x 9)	Trailing	4	9-11	
JPW16019	489E	1219 x 228 (48 x 9)	Trailing	4	11-13	
JPW16000	1212E	305 x 305 (12 x 12)	Riveted	2	5-7	
JPW16044	1812E	457 x 305 (18 x 12)	Riveted	2	6-8	
JPW16021	2412E	610 x 305 (24 x 12)	Riveted	4	7-9	
JPW16045	3012E	762 x 305 (30 x 12)	Riveted	4	7-9	
JPW16017	3612E	914 x 305 (36 x 12)	Riveted	4	8-10	
JPW16024	4212E	1067 x 305 (42 x 12)	Riveted	4	9-11	
JPW16025	4812E	1219 x 305 (48 x 12)	Riveted	4	11-13	
JPW16027	5412E	1371 x 305 (54 x 12)	Riveted	4	15-18	
JPW16028	6012E	1524 x 305 (60 x 12)	Riveted	4	18-20	
JPW16029	6612E	1676 x 305 (66 x 12)	Riveted	4	20-22	
JPW16031	7212E	1829 x 305 (72 x 12)	Riveted	4	22-24	

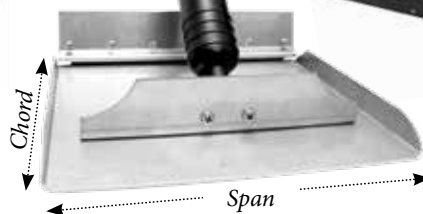
Sport
10" or 12" Chord



Trailing Edge
9" or 12" Chord



Riveted Angle
12" Chord



Complete System with Electronic Indicator



*Boat size is recommended only

Part No.	Bennett Code	Span/Chord		Tab	No. of Actuators	Boat Size* (m)
		mm (inch)				
JPW16218	M80EIC	203 x 254 (8 x 10)	Sport	2	5-6	
JPW16215	M120EIC	254 x 305 (10 x 12)	Sport	2	6-7	
JPW16219	129EIC	305 x 228 (12 x 9)	Trailing	2	4-6	
JPW16002	189EIC	457 x 228 (18 x 9)	Trailing	2	6-7	
JPW16220	249EIC	610 x 228 (24 x 9)	Trailing	2	6-8	
JPW16281	1212EIC	305 x 305 (12 x 12)	Riveted	2	5-7	
JPW16221	1812EIC	457 x 305 (18 x 12)	Riveted	2	6-8	
JPW16222	2412EIC	610 x 305 (24 x 12)	Riveted	1	7-9	

Complete System with Integrated Helm Control



*Boat size is recommended only

Part No.	Bennett Code	Span/Chord		Tab	No. of Actuators	Boat Size* (m)
		mm (inch)				
JPW16208	M80OBI	203 x 254 (8 x 10)	Sport	2	5-6	
JPW16216	M120OBI	254 x 305 (10 x 12)	Sport	2	6-7	

Complete System with AutoTrim Pro



*Boat size is recommended only

Part No.	Bennett Code	Span/Chord		Tab	No. of Actuators	Boat Size* (m)
		mm (inch)				
JPW16047	M80ATP	203 x 254 (8 x 10)	Sport	2	5-6	
JPW16048	M120ATP	254 x 305 (10 x 12)	Sport	2	6-7	
JPW16049	129ATP	305 x 228 (12 x 9)	Trailing	2	4-6	
JPW16050	189ATP	457 x 228 (18 x 9)	Trailing	2	6-7	
JPW16051	249ATP	610 x 228 (24 x 9)	Trailing	2	6-8	
JPW16052	1212ATP	305 x 305 (12 x 12)	Riveted	2	5-7	
JPW16053	1812ATP	457 x 305 (18 x 12)	Riveted	2	6-8	
JPW16054	2412ATP	610 x 305 (24 x 12)	Riveted	2	7-9	

Rocker Switch Controls



This control is ergonomically designed, water resistant and provides a distinctive “click” when the trim tabs are engaged.

- Distinctive click action for precise trim tab adjustment.
- Economical and easy installation.



BASIC



Part No.	Bennett Code	Power
JPW16170	ES2000	Hydraulic Systems ●
JPW16320	BRC4000	Electric Systems ●

Integrated Helm Controls



An attractive and user-friendly, stand-alone helm control without the need for an external control unit. The functionality and “brains” of the control unit are engineered directly into a single, space-saving, and simple-to-install keypad.

- Convenient “All Up” and “All Down” buttons.
- Trim tab position LEDs always show you where your tabs are.
- Auto tab retraction (tabs retract up when the ignition is powered off).
- Easy-to-install single lock nut design.
- Compatible with other trim tab system brands.
- Easily upgrade from hydraulic systems without tab position indication.

KIT CONTAINS:

- 1 x Helm Control with 3ft cable
- 1 x 20' extension sensor cables (Deutch to Deutch).
- 2 x Upper Hinge Screw-on Sensors (Included with hydraulic only).



ADVANCED



Part No.	Bennett Code	Power
JPW16324	OBI9000H	Hydraulic Systems ●
JPW16323	OBI9000E	Electric Systems ●

AutoTrim Pro Automatic Controls



AutoTrim Pro is an all-in-one auto trim tab control system designed for boats of all sizes—packing a boatload of essential features into an easy-to-use, space-saving keypad. Reduce bow rise, improve visibility, correct listing—automatically.

- Compatible with Bennett and most other trim tab systems.
- Auto trim tab control with favourite buttons.
- Take manual control of your trim tabs at any time.
- Trim tab position indication with adjustable LED's.
- Auto tab retraction when ignition is powered off.

KIT CONTAINS:

- 1 x ATP helm display with 3ft cable (ATPDISP).
- 1 x ATP control unit with 3ft cable (ATPHYDCTRL or ATPBOLTCTRL).
- 1 x 25' extension cable (BHW4025).
- Required hardware.



PREMIUM

Part No.	Bennett Code	Power
JPW16058	AP000A1HA	Hydraulic Systems ●
JPW16059	AP000A1BC	Electric Systems ●

Mente Marine ACS Auto Trim Tab Controller

Attitude control system for controlling boats roll (healing) and pitch (angle), suits lengths from 6m to 18m.

- Wires of actuators or hydraulic pump are connected directly to the back of the control panel.
- Compatible with all popular trim tabs (Lectrotab, Lenco, Bennett, Instatrim)
- Tab position is estimated and displayed for all kinds of trim tabs.
- Automatic control is suspended while turning.
- Adapts to varying sea conditions.
- Off the plane sleep; suspended while off the plane.
- Voltage: 10-30V DC.
- Max output current: 18A (when tabs activated).



Part No.	Power
JPW16150	Electric and Hydraulic Systems ● ●

Actuators

Strong but flexible nylon/fiberglass hydraulic cylinders. Fluid flows through a concealed hole in the upper hinge at the top of the actuator, thus eliminating external hoses subject to damage.

- The piston-like arms push tabs into position.
- All models provide a 63.5mm (2.5") stroke.



Rivet Clear Hinge
Used when mounting bracket is located back from tab end eg: M80/M120 Tabs



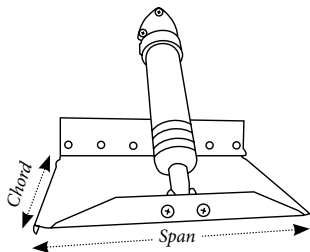
Part No.	Bennett Code	Type	Length (mm)	Power
JPW16157	A1101A	Standard	340	Hydraulic
JPW16157B	-	Standard with 10" sensor wire	340	Hydraulic
JPW16158	A1101EX	Standard with External Line	340	Hydraulic
JPW16159	A1200S	Short	290	Hydraulic
JPW16159B	-	Short with 10" sensor wire	290	Hydraulic
JPW16160	SA1016S	Extra Short	270	Hydraulic
JPW16160B	-	Extra Short with 10" sensor wire	270	Hydraulic
JPW16332	BEA2000	BOLT Standard with Fixed Upper Hinge	350	Electric
JPW16334	BEA3000	BOLT Standard with Adjustable Upper Hinge	350	Electric
JPW16335	SEA3000	BOLT Short with Adjustable Upper Hinge	290	Electric



Trim Plane Assemblies

Made of high quality 12 or 14 gauge 304 stainless steel.

- Each assembly includes 1x trim plane, 1x hinge plate and 1x backing plate.



Part No.	Bennett Code	Span/Chord (inch)
Riveted Angle		
JPW16080	TPA1212	12 x 12
JPW16084	TPA1812	18 x 12
JPW16082	TPA2412	24 x 12
JPW16090	TPA3012	30 x 12
JPW16092	TPA3612	36 x 12
JPW16093	TPA4212	42 x 12
JPW16095	TPA4812	48 x 12
JPW16097	TPA5412	54 x 12

Part No.	Bennett Code	Span/Chord (inch)
Piano Hinge		
JPW16088	TPA124	12 x 4
Sport		
JPW16231	TPAM80	8 x 10
JPW16230	TPAM120	10 x 12
Trailing Edge		
JPW16077	TPA109	10 x 9
JPW16078	TPA129	12 x 9
JPW16083	TPA189	18 x 9
JPW16087	TPA249	24 x 9
JPW16089	TPA309	30 x 9
JPW16091	TPA369	36 x 9
JPW16085	TPA429	42 x 9
JPW16096	TPA489	48 x 9

Assembly Components

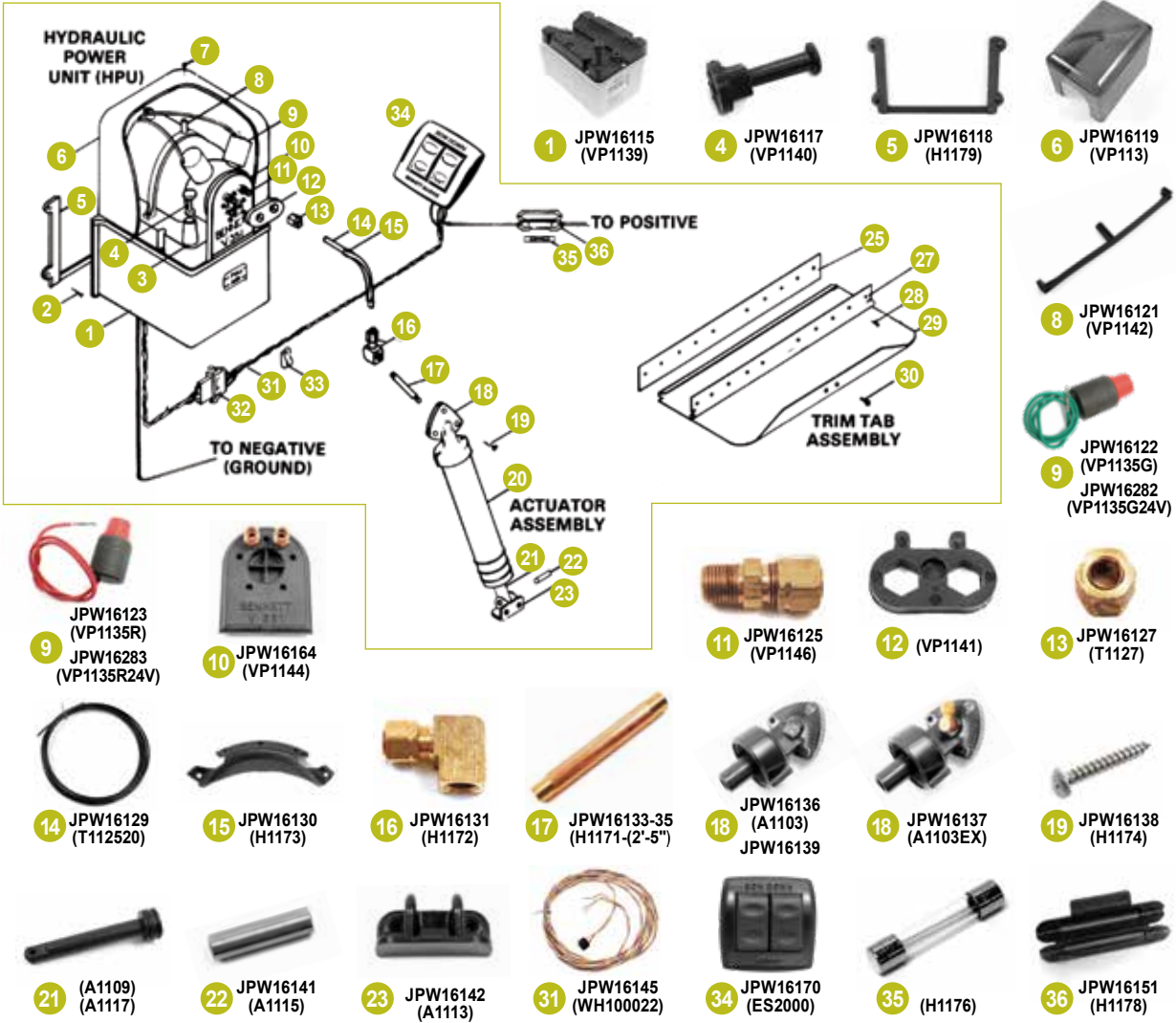


Trim Plane Assemblies (TPA) consist of 3 main components which can all be ordered separately. When ordering separately, simply swap "TPA" with the below acronyms.

Eg: BP12 is a 12" Backing Plate Only.

- BP - Backing Plate Only
- HP - Hinge Plate Only
- TPO - Trim Plane Only
- TPA - Complete Assembly

HYDRAULIC SYSTEM SPARE PARTS DIAGRAM



Part No.	Bennett Code	Description	Item
JPW16115	VP1139	Fluid Reservoir	1
-	H1180	#10 x 1" Full Threaded Screw (HPU mounting bracket fastener)	2
-	-	Filler Stack	3
JPW16117	VP1140	Filler Plug	4
JPW16118	H1179	Mounting Bracket for HPU	5
JPW16119	VP1138	Lexan Cover	6
-	VP1154	#8 x 3/4" Phil Pan Sheet Metal Screw (Lexan Cover Fastener)	7
JPW16121	VP1142	Motor Strap	8
JPW16122	VP1135G	Solenoid Valve 12V Green Wire (Starboard)	9
JPW16123	VP1135R	Solenoid Valve 12V Red Wire (Port)	9
JPW16282	VP1135G24V	Solenoid Valve 24V Green Wire (Starboard)	9
JPW16283	VP1135R24V	Solenoid Valve 24V Red Wire (Port)	9
JPW16164	VP1144	HPU Face Plate	10
JPW16125	VP1146	1/8 Pipe to 1/4" Tube Connector	11
-	VP1141	Hex Retainer	12
JPW16127	T1127	Nut with Ferrule	13
JPW16129	T112520	Hydraulic Tubing (20')	14
JPW16130	H1173	Tube Bending Clip	15
JPW16131	H1172	Female Elbow	16
JPW16133-35	H1171-(3,5)	3", 4" or 5" Pipe Nipples (2" also available)	17

Part No.	Bennett Code	Description	Item
JPW16139	-	Hydraulic Upper Hinge (Extra Short)	18
JPW16136	A1103	Hydraulic Upper Hinge (Standard & Short)	18
JPW16137	A1103EX	Hydraulic Upper Hinge (External Line)	18
JPW16138	H1174	#14 x 1-1/2" Full Threaded Screw	19
-	A1105	Hydraulic Cylinder Body	20
-	A1109	Piston with O-ring	21
-	A1117	Piston with O-ring (Small Actuator)	21
JPW16141	A1115	Stainless Steel Lower Hinge Pin	22
JPW16142	A1113	Actuator Lower Hinge (Clear)	23
-	various	Backing Plate	25
-	various	Hinge Plate	27
JPW16147	EH1071	#10 x 1-1/4" Full Thread Screw (Trim Tab to Transom Fastener)	28
-	various	Trim Tab Only	29
JPW16143	H1175	1/4-20 x 3/4" Machine Screw (Lower Hinge Fastener)	30
JPW16145	WH100022	Standard 22' Wire Harness	31
-	VP1143	Quick-Disconnect Plug	32
-	H1177	Nylon Hangers	33
JPW16170	ES2000	Euro-style Rocker Switch	34
-	H1176	20 Amp Fuse	35
JPW16151	H1178	Fuse Holder	36

COMMON REPLACEMENT PARTS AND ACCESSORIES



Part No.	Bennett Code	Description
JPW16060	ATPSENSTD	AutoTrim Pro Standard/Short Sensor Kit
JPW16061	ATPSEN1.225SD	AutoTrim Pro Extra Short Sensor Kit
JPW16062	AR512	Auto Tab Retractor 12V (Black Podding)
JPW16063	AR524	Auto Tab Retractor 24V (Tan Podding)
JPW16124	ATC9	White PVC Clip for Actuators
JPW16128	T1126	Brass Line Tee Fitting
JPW16132	PT109	Pigtail for Wire Harness
JPW16146	PT110	Pigtail for HPU or Control
JPW16162	VP351HPU1	Hydraulic Power Unit 12V (Pump)
JPW16163	VP351HPU2	Hydraulic Power Unit 24V (Pump)
JPW16166	CC3003-P	Actuator Upper Hinge w/Coil - Port
JPW16167	EIC901SASS	Actuator Upper Hinge - Port (Extra Short with EIC)
JPW16168	CC3003-S	Actuator Upper Hinge w/Coil - Stbd.
JPW16169	EIC901SASP	Actuator Upper Hinge - Starboard (Extra Short with EIC)
JPW16174	RM12	Relay Module 12V (Auto Tab)
JPW16175	RM24	Relay Module 24V (Auto Tab)
JPW16191	A1120	Actuator Upper Hinge O-Ring
JPW16192	A1121	Actuator Piston O-Ring
JPW16197	H1170A	Hydraulic Trim Tab Hardware Pack
JPW16198	H1170B	Dual Actuator Hardware Pack
JPW16236	VP1159	Valve Seat with O-Ring
JPW16237	VP1160	HPU Valve Spring
JPW16238	VP1161	HPU Valve Plunger
JPW16247	PT950P	EIC Port Pigtail
JPW16248	PT950S	EIC Starboard Pigtail
JPW16249	EIC001	EIC Control/Display
JPW16250	EIC101	EIC Relay Module 12V (Black Podding)

Part No.	Bennett Code	Description
JPW16251	EIC102	EIC Relay Module 24V (Tan Podding)
JPW16252-56	EIC201(20'-40')	EIC 20' - 40' Wire Harness
JPW16257	EIC301	EIC 4' Wire Harness
JPW16268	EIC601	EIC Bridge Hardware Pack
JPW16269	EIC701	EIC Bridge Junction Box
JPW16270	EIC801	EIC Bridge Wire Harness 20'
JPW16275	EIC901P	EIC Upper Hinge w/ 10' Sensor Wire - Port
JPW16278	EIC901S	EIC Upper Hinge w/ 10' Sensor Wire - Starboard
JPW16333	BEA2100	Bolt Actuator Upper Hinge Spacer
JPW16340	BCN6500	BCN Relay Module (White Cover)
JPW16341	BCN6700	Helm Keypad (Non-Indicator)
JPW16342	BCI8500	BCI Relay Module (Black Cover)
JPW16350-53	BAW20(05'-20')	5', 10', 15', or 20' Wire Harness
JPW16360-63	BHW40(03'-10')	3', 5', 7', or 10' Helm Keypad Wire Ext.
-	AC3250	ATC Keypad
-	AC32506	ATC 6' Keypad Cable
-	AC325022	ATC 22' Keypad Bridge Cable
-	AC3400	ATC Control Unit
-	ATPBOLTCTRL	AutoTrim Pro Control Unit (Electric)
-	ATPDISP	AutoTrim Pro Helm Display
-	ATPDISPBPR	AutoTrim Pro Helm Display (Bridge)
-	ATPHYDCTRL	AutoTrim Pro Control Unit (Hydraulic)
-	H1175	1/4 - 20 x 3/4" Machine Screw
-	PT110	Pigtail for HPU or Control
-	VP1154	#8 x 3/4" Phil Pan Sheet Metal Screw
-	WH3006	ATC 4-Color Wire Harness 6'

HOW TO ORDER

Select products from the catalogue or through our website using the product categories or search function. Make note of the part numbers to facilitate ordering.

ONLINE



Login to our website
with your customer username & password.

www.jpwmarine.com.au

If you know our product codes, use the
'Quick Order' form for a speedy checkout.

PHONE



Call us during standard
Western Australian business hours on

(08) 6253 3000

to place order by phone.

EMAIL



Email your order to

orders@jpwmarine.com.au



JPW MARINE

WHOLESALE MARINE SPECIALISTS